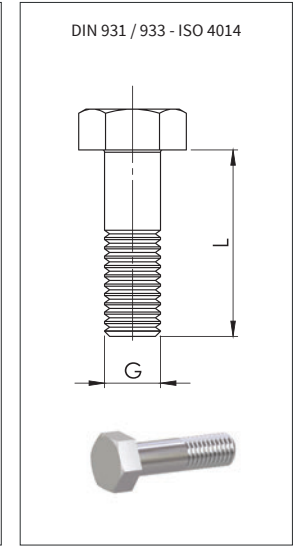
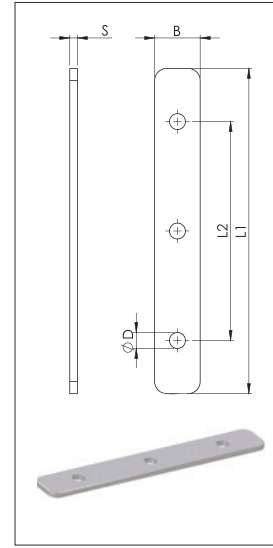
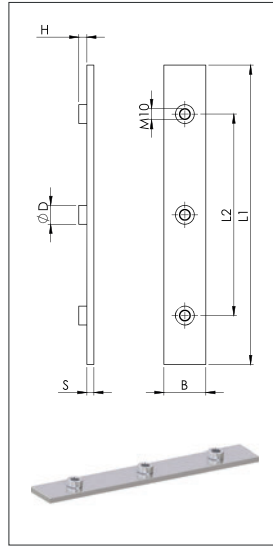
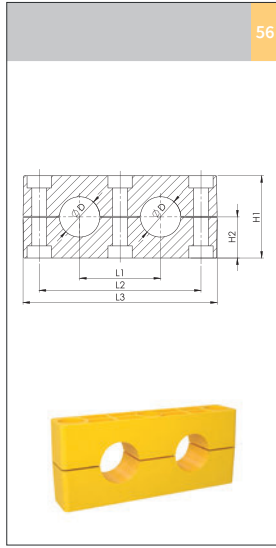




**Hidrolik Boru Kelepçeleri**  
Hydraulic Pipe Clamps



Metal + Kaplama Tipi Metal + Surface Finishing		Gövde Malzemesi Clamp Body Material	
0	Kaplamasız / Uncoated	A	Alüminyum / Aluminum
1	Fosfat / Phosphated / Fe/Znph	N	Polyamid / Polyamide
3	Galvaniz / Galvanized / Fe/Zn 8C Cr3-B	T	TPE
4	CrNi 304 AISI 304	P	Polipropilen / Polypropylene
6	CrNi 316 AISI 316		
9	Çinko Nikel / Zinc Nickel / Fe/ZnNi		



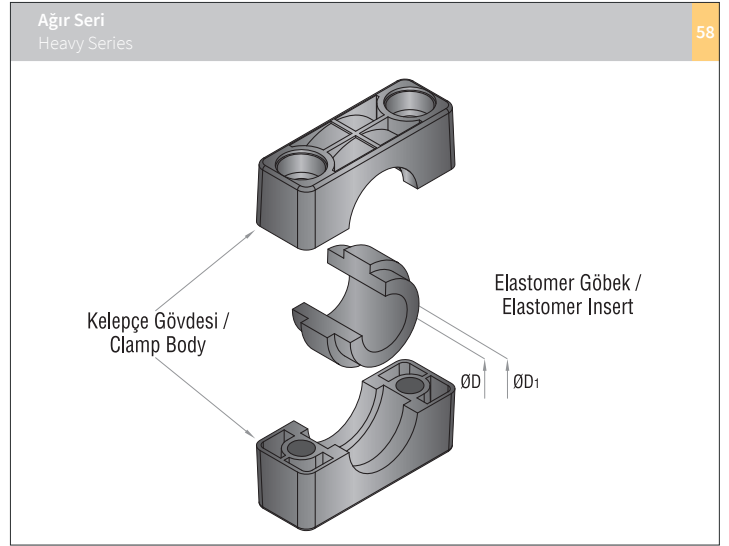
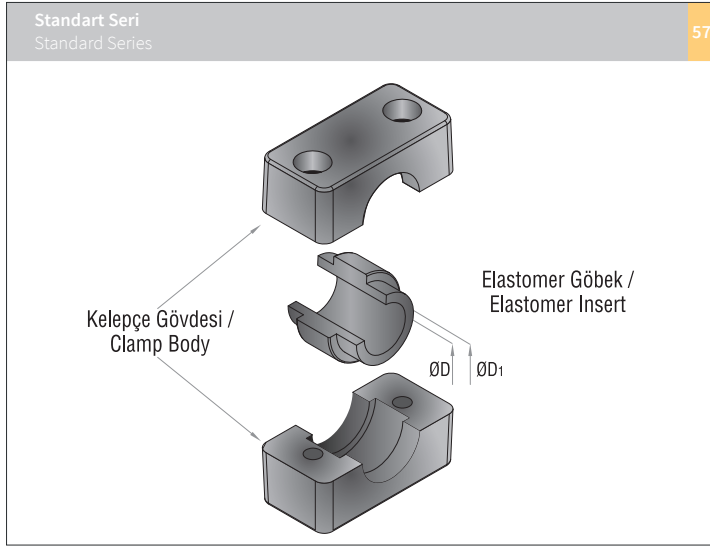
Sipariş Kodu / Order Code

Grup Group	Dış Çap (ØD) O.D. of Pipe / Tube/Hose mm	Anma Çapı (R) Boru Dış Nominal Bore Pipe inch	Kelepçe Gövdesi Clamp Body	Alt Plaka Weld Plate	Üst Plaka Cover Plate	Altıköşe Başlı Cıvata Hexagon Head Bolt
H2	19		C2P1SH2019.0	CA00M3H2	CU00T3H2	CCAM3010060
	20		C2P1SH2020.0			
	21.3	R 1/2	C2P1SH2021.3			
	22		C2P1SH2022.0			
	25		C2P1SH2025.0			
	25.4		C2P1SH2025.4			
	26.9	R 3/4	C2P1SH2026.9			
	28		C2P1SH2028.0			
H3	30		C2P1SH2030.0	CA00M3H3	CU00T3H3	CCAM3010070
	30		C2P1SH3030.0			
	32		C2P1SH3032.0			
	33.7	R 1	C2P1SH3033.7			
	35		C2P1SH3035.0			
	38		C2P1SH3038.0			
	40		C2P1SH3040.0			
	42	R1 1/4	C2P1SH3042.0			

Ölçü Tablosu / Dimension Table

Grup Group	Dış Çap (ØD) O.D. of Pipe / Tube/Hose mm	Anma Çapı (R) Boru Dış Nominal Bore Pipe inch	Kelepçe Gövdesi Clamp Body						Alt Plaka Weld Plate					Üst Plaka Cover Plate					Altıköşe Başlı Cıvata Hexagon Head Bolt GxL			
			L1	L2	L3	H1	H2	ØD	L1	L2	B	S	H	ØD	L1	L2	B	S		ØD		
H2	19																					
	20																					
	21,3	R 1/2																				
	22																					
	25			115	90	45	48	24	30	130	90	30	8	8.5	18	115	90	30	8	11	M10x60 3/8-16 UNC x 2-1/4	
	25.4																					
	26.9	R 3/4																				
	28																					
H3	30																					
	30																					
	32																					
	33.7	R 1/1																				
	35			144	120	60	60	30	30	160	120	30	8	8.5	18	144	120	30	8	11	M10x70 3/8-16 UNC x 2-3/4	
	38																					

\* İstek üzerine, ikiz seri boru kelepçelerinin delikleri birbirinden farklı çaplarda da üretilebilmektedir.  
\* In twin series pipe clamps the diameter of each pipe hole can be produced with different size upon request.



Grup Group	Çap Diameter		Sipariş Kodu Order Code	
	ØD mm	ØD1 mm	Kelepçe Gövdesi Clamp Body	Gövde + Elastomer Body + Elastomer
G4	6	25.5	C2P4HG4000.0	CDaaT00P4HG4006.0
	6.4			
	8			
	9.5			
	10			
	12			
	12.7			
	13.5			
	14			
	15			
	16			
	17.2			
G6	18	39	C2P4HG6000.0	CDaaT00P4HG4018.0
	19			
	20			
	21.3			
	22			
	23			
	25			
	25.4			
	26.9			
	28			
	30			
	32			

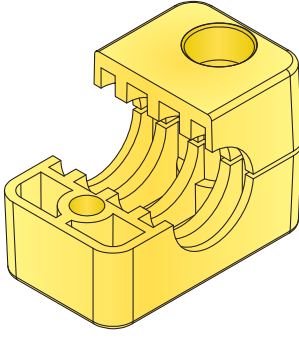
Grup Group	Çap Diameter		Sipariş Kodu Order Code	
	ØD mm	ØD1 mm	Kelepçe Gövdesi Clamp Body	Gövde + Elastomer Body + Elastomer
A2	6	25.5	C2P4HA2000.0	CDaaT00P4HA2006.0
	6.4			
	8			
	9.5			
	10			
	12			
	12.7			
	13.5			
	14			
	15			
	16			
	17.2			
A3	18	39	C2P4HA3000.0	CDaaT00P4HA2018.0
	19			
	20			
	21.3			
	22			
	25			
	25.4			
	26.9			
	28			
	30			
	32			
	32			
A4	33.7	65	C2P4HA4000.0	CDaaT00P4HA4032.0
	37			
	38			
	40			
	42			
	44.5			
	48.3			
	50.8			
	55			
	57			
	57			
	60.3			
A5	63.5	89	C2P4HA5000.0	CDaaT00P4HA5060.3
	65			
	70			
	73			
	76.1			
	80			
	82.5			
	88.9			
	100			
	101.6			
	108			
	114.3			
A7	127	152	C2P4HA7000.0	CDaaT00P4HA7127.0
	133			
	168.3			
	193.7			
A8	219.1	175	C2P4HA8000.0	CDaaT00P4HA8168.3
	193.7			
	219.1			

Gövde Malzemesi Clamp Body Material	
N	Polyamid / Polyamide
P	Polipropilen / Polypropylene

Elastomer Elastomer Insert	
T	TPE 60 Shore A
	Termoplastik Elastomer Thermoplastic Elastomer

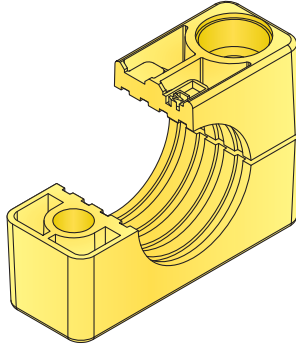
\* Elastomer Göbek sipariş kodları için sayfa 4'e bakınız.  
\* See page 4 for Elastomer Insert order codes.

Standart Seri / Standard Series



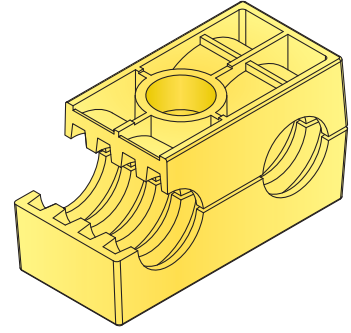
**Standart Tasarım**  
Standard Design

Ađır Seri / Heavy Series

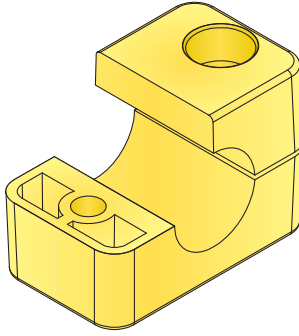


**Standart Tasarım**  
Standard Design

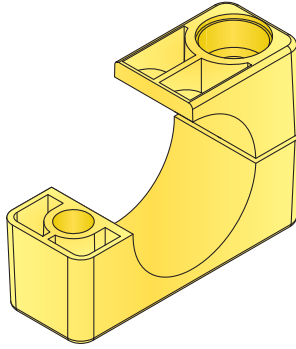
İkiz Seri / Twin Series



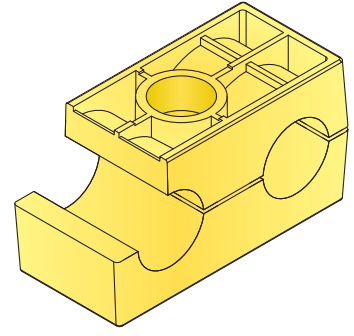
**Standart Tasarım**  
Standard Design



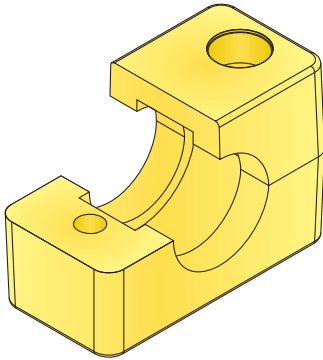
**G Biçimli Tasarım**  
(Hortumlar için önerilir)  
Form G Design  
(Recommended for Hoses)



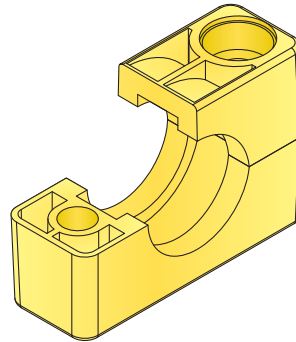
**G Biçimli Tasarım**  
(Hortumlar için önerilir)  
Form G Design  
(Recommended for Hoses)



**G Biçimli Tasarım**  
(Hortumlar için önerilir)  
Form G Design  
(Recommended for Hoses)



**E Biçimli Tasarım**  
(Elastomerli Kelepçeler için)  
Form E Design  
(For Elastomer Inserts)



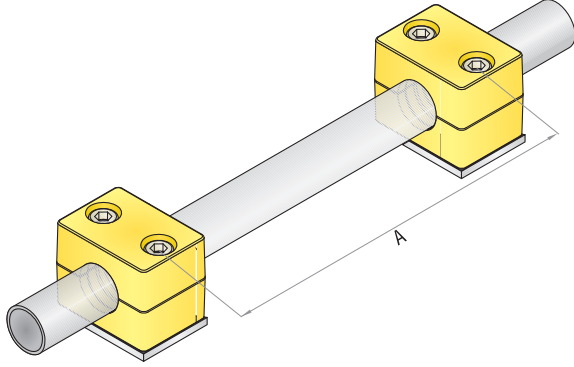
**E Biçimli Tasarım**  
(Elastomerli Kelepçeler için)  
Form E Design  
(For Elastomer Inserts)

**Kelepçe Bağlantısı için Bırakılacak Ara Ölçüler**

Kelepçelerin aralarında bulunması gereken uzaklık değerleri standarttır ve bu değerler statik yüklemeler için geçerlidir. Güvenli çalışma için daha kısa aralıklarla bağlantı yapılması önerilir. Yerden yüksekte bulunan boru hatlarındaki kelepçeler, boru hattının taşınması görevini de üstleniyorsa, yerleşim hesabında tabloda önerilen uzaklık değerlerinin yarısı alınmalıdır.

**Spacings for Clamps**

The given distances between the clamps are standart values that are valid for static loading. Choosing shorter distances between the clamps is recommended to have a secure operation. If the clamps are used as pipe fitting support for high pipe lines then half of the given distances must be used.



Boru Dış Çapı / Pipe-O.D. mm
6.0 - 12.7
12.7 - 22.0
22.0 - 32.0
32.0 - 38.0
38.0 - 57.0
57.0 - 75.0
75.0 - 76.1
76.1 - 88.9
88.9 - 102.0
102.0 - 114.0
114.0 - 168.0
168.0 - 219.0
219.0 - 324.0
324.0 - 356.0
356.0 - 406.0
406.0 - 419.0
419.0 - 508.0
508.0 - 521.0
521.0 - 558.0
558.0 - 800.0

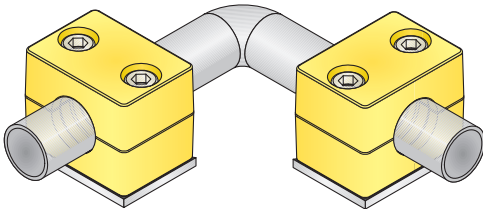
Uzaklık / Distance A m
1.0
1.2
1.5
2.0
2.7
3.0
3.5
3.7
4.0
4.5
5.0
6.0
6.7
7.0
7.5
8.2
8.5
9.0
10.0
12.5

**Kıvrımlı Boruların Bağlantısı**

Kıvrımlı borularda kullanılacak kelepçeler büküm noktalarına olabildiğinde yakın bir şekilde ve boruların her iki tarafına yerleştirilmelidir.

**Pipe Bend Installation**

Clamps that are used at the bends must be located as close as possible to the bends at both sides.

**Boru Bağlantıları İçin Öneriler**

Üstlendikleri görevi tam olarak gerçekleştirebilmeleri için, hangi tür bağlantı olursa olsun, kelepçelerin yerleştirildikleri yere çok iyi sabitlenmeleri gerekir.

Rakor kullanılan boru hatlarında, dışların sistem titreşiminden etkilenip çözülmesinin önlenmesi için, ilk kelepçe rakor bağlantısının hemen ardına yerleştirilmelidir.

Boru hattı üzerine yerleştirilmiş valf bulunuyorsa, hattın güvenli çalışmasını sağlamak için valfin önüne ve arkasına koyulacak kelepçeler ile borular sabitlenmelidir.

**Suggestions for Pipe Installations**

In order to fulfill their purpose, clamps must be fixed strongly in situ for all types of connections.

For the pipelines where fittings are used, to prevent the threads to be affected and loosen up, the first clamp must be placed right after the fitting.

If there are valves on pipeline, the pipes must be fixed using clamps right before and after the valves in order to provide safe operation of the system.

**Dış Göstergesi / Thread Chart****Standart Seri / Standard Series**

Grup No. Group No.	Metrik Vida Metric Thread	UNC Vida UNC Thread
G0		
G1		
G2		
G3		
G4	M6	1/4" - 20 UNC
G5		
G6		
G7		
G8		

**Dış Göstergesi / Thread Chart****Ağır Seri / Heavy Series**

Grup No. Group No.	Metrik Vida Metric Thread	UNC Vida UNC Thread
A1		
A2	M10	3/8" -16 UNC
A3		
A4	M12	7/16" -14 UNC
A5	M16	5/8" -11 UNC
A6	M20	3/4" -10 UNC
A7	M24	7/8" -9 UNC
A8		
A9	M30	1 1/8" -7 UNC
A10		

**Dış Göstergesi / Thread Chart****İkiz Seri / Twin Series**

Grup No. Group No.	Metrik Vida Metric Thread	UNC Vida UNC Thread
I1	M6	1/4" - 20 UNC
I2		
I3		
I4	M8	5/16" -18 UNC
I5		

**Boru Sıkma Kuvvetleri ve Maksimum Eksenel Yük Değerleri**

Tüm sıkma kuvvetleri ve boru üzerindeki maksimum eksenel yük değerleri, çift plakalı ve altıköşe başlı cıvata (DIN 931/933) ile bağlantı yapılmış kelepçeler içindir.

Boru üzerindeki maksimum eksenel yükler (DIN 3015/10'a göre) ortalama bir değerdir ve çelik çekme boru (DIN 2448, St37) ile 23°C sıcaklıkta yüzey sürtünme değerleri göz önüne alınarak yapılan 3 deney sonucu belirlenmiştir.

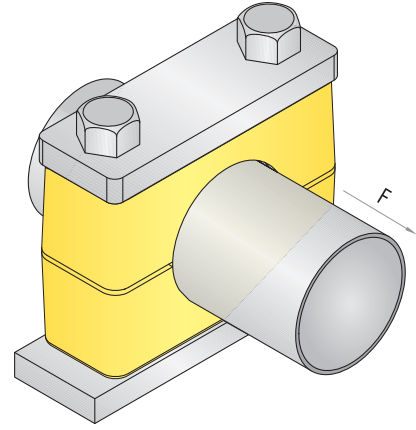
Belirlenen F değerine ulaşıldığında kayma başlar.

**Tightening Torques and Maximum Loads in Pipe Direction**

All values supplied for tightening torques and maximum loads in pipe direction are given for clamps with cover plates and hexagon head bolts acc. to (DIN 931/933).

Maximum loads in pipe direction (acc. to DIN 3015 part 10) given below are average values, obtained from three tests at 23°C with a steel pipe. (acc. to DIN 2448, St 37)

When the values (F) given below are reached, sliding starts.

**Standart Seri / Standard Series (DIN 3015/1)**

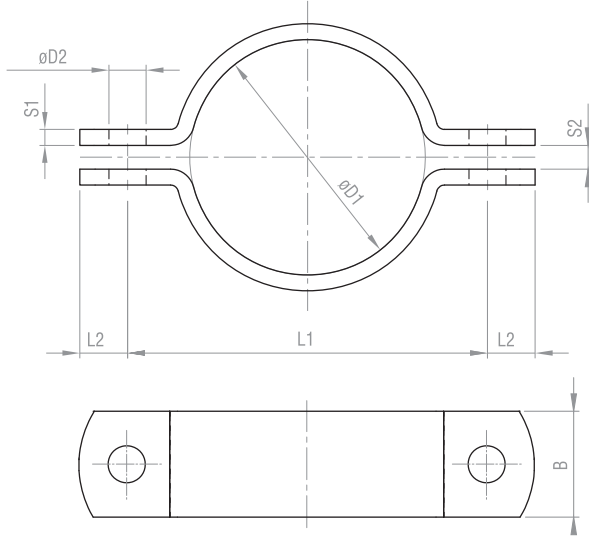
Grup No. Group No.	Altıköşe Başlı Cıvata Hexagon Head Bolt	Polipropilen / Polypropilen		Polyamid / Polyamide		Alüminyum / Aluminium	
		Sıkma Torku Tightening Torque (Nm)	Max. Yük Max. Load (F) KN	Sıkma Torku Tightening Torque (Nm)	Max. Yük Max. Load (F) KN	Sıkma Torku Tightening Torque (Nm)	Max. Yük Max. Load (F) KN
G0	M6	8	0.6	10	0.6	-	-
G1		8	1.1	10	0.7	12	4.2
G2		8	1.3	10	0.8	12	4.3
G3		8	1.4	10	1.6	12	4.9
G4		8	1.5	10	1.7	12	5.0
G5		8	1.9	10	2.0	12	7.3
G6		8	2.0	10	2.5	12	8.9

**Ağır Seri / Heavy Series (DIN 3015/2)**

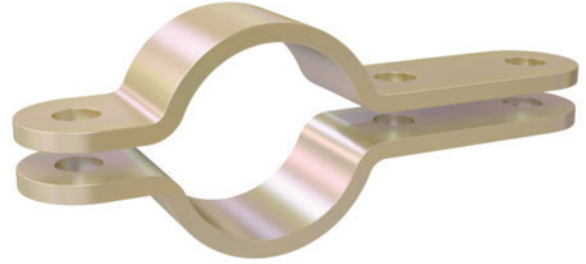
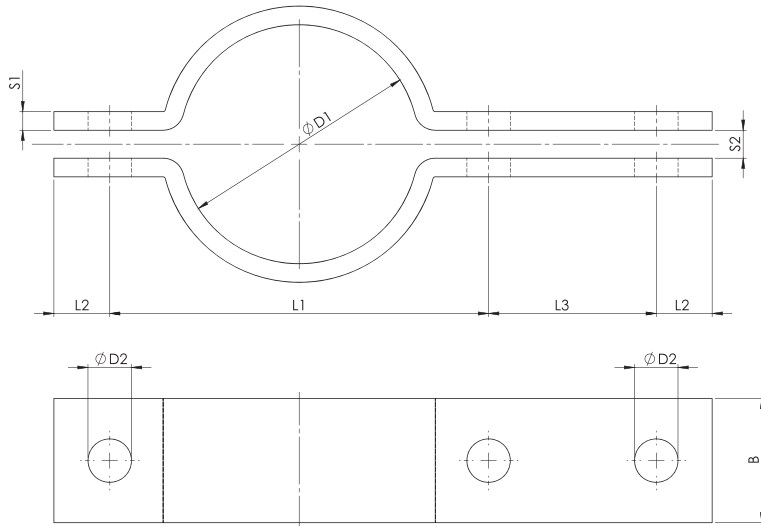
Grup No. Group No.	Altıköşe Başlı Cıvata Hexagon Head Bolt	Polipropilen / Polypropilen		Polyamid / Polyamide		Alüminyum / Aluminium	
		Sıkma Torku Tightening Torque (Nm)	Max. Yük Max. Load (F) KN	Sıkma Torku Tightening Torque (Nm)	Max. Yük Max. Load (F) KN	Sıkma Torku Tightening Torque (Nm)	Max. Yük Max. Load (F) KN
A1	M10	12	1.6	20	4.2	30	12.1
A2		12	2.9	20	4.5	30	15.1
A3		15	3.3	25	5.1	35	15.5
A4	M12	30	8.2	40	9.3	55	29.4
A5	M16	45	11.0	55	25.8	120	34.8
A6	M20	80	14.0	150	21.0	220	50.0
A7	M24	110	28.0	200	32.0	250	70.6
A8	M30	180	40.0	350	48.0	500	84.5
A9		200	119.0	370	125.0	500	181.5
A10		270	168.0	470	180.0	600	244.5

**İkiz Seri / Twin Series (DIN 3015/3)**

Grup No. Group No.	Altıköşe Başlı Cıvata Hexagon Head Bolt	Polipropilen / Polypropilen		Polyamid / Polyamide	
		Sıkma Torku Tightening Torque (Nm)	Max. Yük Max. Load (F) KN	Sıkma Torku Tightening Torque (Nm)	Max. Yük Max. Load (F) KN
I1	M8	5	0.9	5	0.95
I2		12	2.1		2.20
I3		12	1.9	12	2.00
I4		8	2.7		2.95
I5		8	1.7	8	2.50

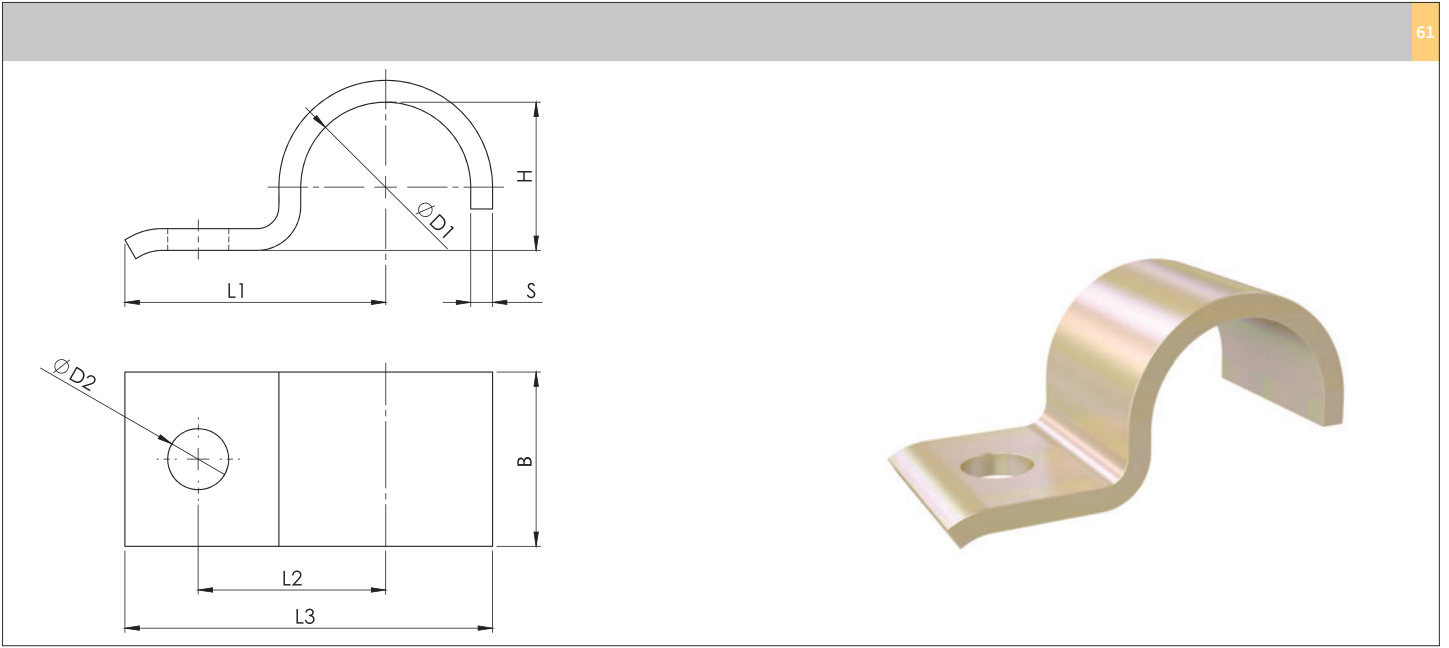


ØD1	Dış Çap (ØD) O.D. of Pipe / Tube/Hose mm	Anma Çapı (R) Boru Dış Nominal Bore Pipe Inch	L1	L2	S1	S2	ØD2	B	Ek Parçalar Accessories	Sipariş Kodu Order Code
20	15	R 3/4	57	15	5	7	11.5	30	M10x30 M10	K003567.020
22			59							K003567.022
25	62	K003567.025								
27	66	K003567.027								
30	68	K003567.030								
34	72	K003567.034								
38	76	K003567.038								
43	82	K003567.043								
45	84	K003567.045								
49	88	K003567.049								
57	50	R 2	104	18	6	9	14	40	M12x35 M12	K003567.057
61	108	R 2 1/2	108							K003567.061
77	122	R 3	122							K003567.077
89	136		136							K003567.089
108	100	R 4	172	24	8	11	18	50	M16x45 M16	K003567.108
115	178		178							K003567.115
133	196	R 5	196							K003567.133
140	204		204							K003567.140
159	222	R 6	222							K003567.159
169	232		232							K003567.169
194	258		258							K003567.194
216	280		280	K003567.216						
220	200		284	K003567.220						
267	250		342	30	8	14	23	60	M20x50 M20	K003567.267
273	348		348							K003567.273
318	392		392							K003567.318
324	398		398							K003567.324
356	432		432							K003567.356
368	350		444	K003567.368						
407	400		498	36	10	18	27	70	M24x60 M24	K003567.407
419	510		510							K003567.419
458	550		550							K003567.458
508	600		600							K003567.508
521	614		614							K003567.521
610	717		717							K003567.610
712	812		812							K003567.712
813	913		913							K003567.813
915	900		1016							K003567.915

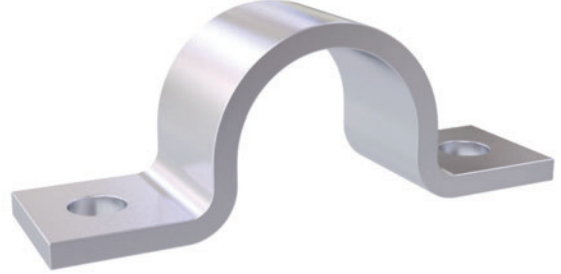
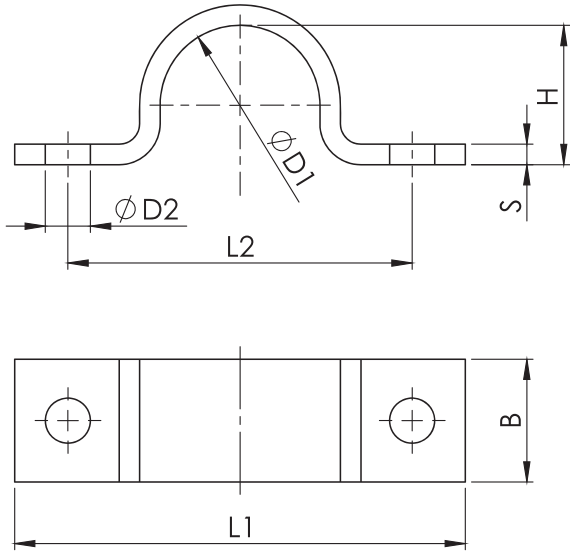


ØD1	Diş Çap (ØD) O.D. of Pipe / Tube/Hose mm	Anma Çapı (R) Boru Diş Nominal Bore Pipe inch	L1	L2	L3	S1	S2	ØD2	B	Ek Parçalar Accessories	Sipariş Kodu Order Code							
20	15	R 3/4	57	15	46	5	7	11.5	30	M10x30 M10	K003567.020B							
22			59								K003567.022B							
25	62	K003567.025B																
27	66	K003567.027B																
30	68	K003567.030B																
34	72	K003567.034B																
38	76	K003567.038B																
43	82	K003567.043B																
45	84	K003567.045B																
49	88	K003567.049B																
57	50	R 2	104	18	54	6	9	14	40	M12x35 M12	K003567.057B							
61			108								K003567.061B							
77			122								K003567.077B							
89	80	R 3	136	24	70	8	11	18	50	M16x45 M16	K003567.089B							
108	172	K003567.108B																
115	178	K003567.115B																
133	196	K003567.133B																
140	204	K003567.140B																
159	222	K003567.159B																
169	232	K003567.169B																
194	258	K003567.194B																
216	280	K003567.216B																
220	284	K003567.220B																
267	250	R 4	342	30	86	8	14	23	60	M20x50 M20	K003567.267B							
273			348								K003567.273B							
318	392	K003567.318B																
324	398	K003567.324B																
368	444	K003567.368B																
407	400	R 3	498								36	104	10	18	27	70	M24x60 M24	K003567.407B
419			510															K003567.419B
521			614															K003567.521B

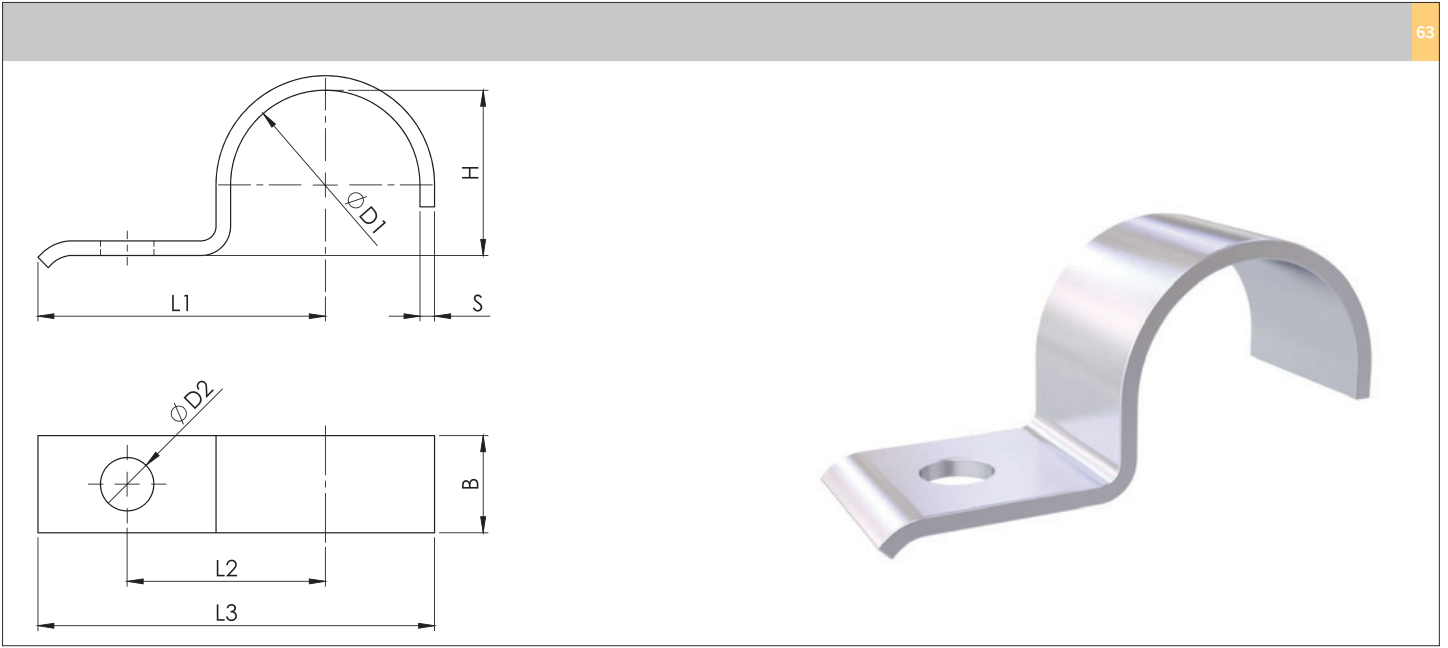




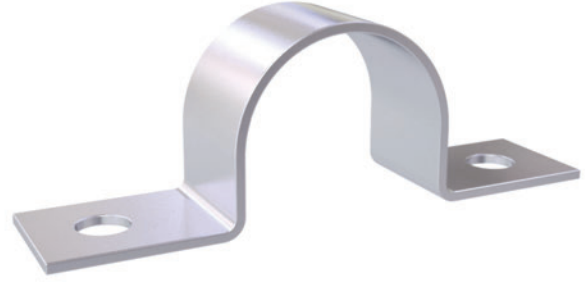
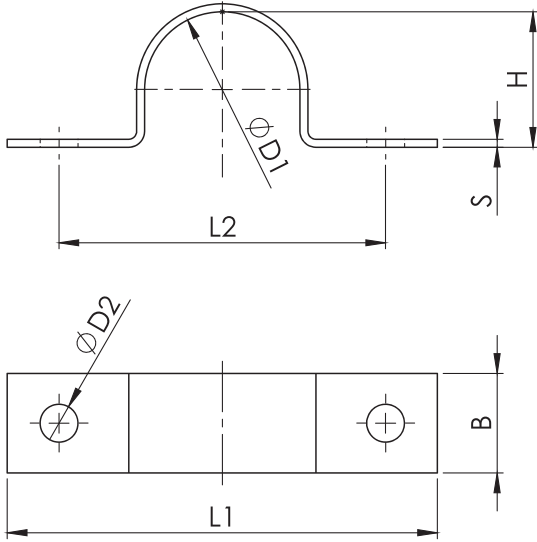
ØD1	Çap Aralığı Diameter Range	L1	L2	L3	H	D2	B	S	Sipariş Kodu Order Code
7	5,5 - 7	22	14	27,5	5		16	2	K001592.007
9	7 - 9	27	18	33,5	6	6,6	20		K001592.009
13	9,5 - 13	40	25	49,5	9		25	3	K001592.013
15,5	13 - 15,5	41	26	52	12	11			K001592.015
19	15,5 - 19	43	28	55,5	15				K001592.019
23	20 - 23	51	35	67	19		30	5	K001592.023
26	23 - 26	52	36	70	22	14			K001592.026
28,5	26 - 28,5	53	37	73	24				K001592.028
31	28,5-31	55	39	75,5	27		40	5	K001592.031
36	33-36	57	41	81	32	14			K001592.036
39	36-39	59	43	83,5	34				K001592.039
43	39-43	68	48	94,5	38		40	5	K001592.043
46	43-46	70	50	98	41	18			K001592.046
49	46-49	73	53	105,5	44				K001592.049
52	49-52	76	56	110	47		40	8	K001592.052
58	53-58	78	58	115	52	18			K001592.058
61	58-61	80	60	118,5	57				K001592.061



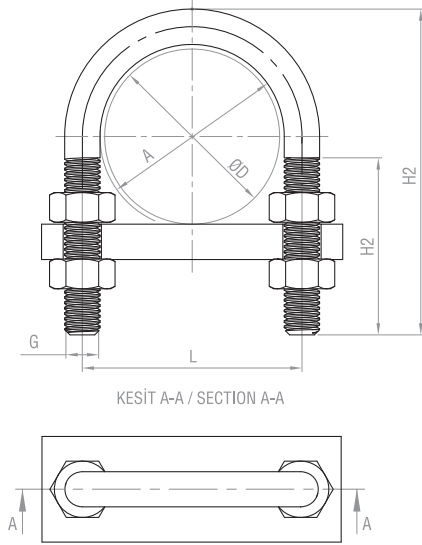
ØD1	Çap Aralığı Diameter Range	L1	L2	H	D2	B	S	Sipariş Kodu
								Order Code
7	5,5- 7	44	28	5	6,6	16	2	K001593.007
9	7 - 9	48	32	6				K001593.009
13	9,5 - 13	52	36	9				K001593.013
15,5	13 - 15,5	56	40	12				K001593.015
19	15,5 - 19	60	44	15				K001593.019
23	20 - 23	82	56	19	11	25	3	K001593.023
26	23 - 26	84	58	22				K001593.026
28,5	26 - 28,5	90	64	24				K001593.028
31	28,5-31	90	64	27				K001593.031
36	33-36	106	80	32				K001593.036
39	36-39	110	84	34	14	30	5	K001593.039
43	39-43	120	88	38				K001593.043
46	43-46	122	90	41				K001593.046
49	46-49	122	90	44				K001593.049
58	53-58	142	110	52				18
61	58-61	142	110	57	K001593.061			
71	67-71	152	120	66	K001593.071			
77	73-77	176	136	72	K001593.077			
81	77-81	184	144	76	K001593.081			
91	86-91	198	158	85	18	40	8	K001593.091
103	99-103	214	174	98				K001593.103
109	105-109	220	180	104				K001593.109
115	110-115	226	186	109				K001593.115



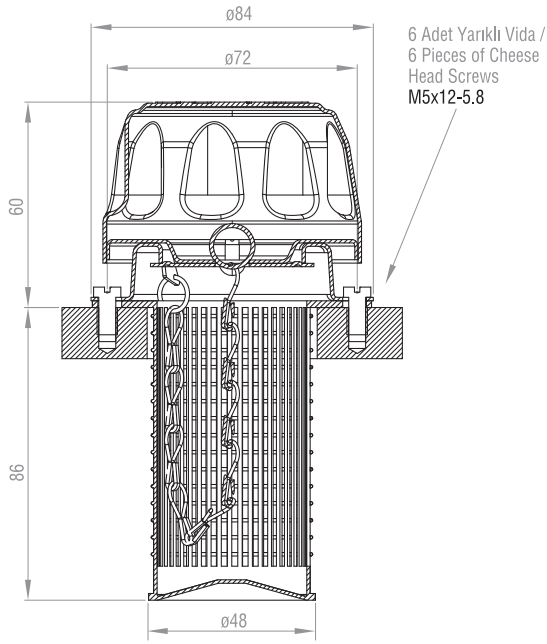
ØD1	Çap Aralığı Diameter Range	L1	L2	L3	H	D2	B	S	Sipariş Kodu Order Code
7	5,5 - 7	26	14	31,5	5	6,6	16	2	K001596.007
9	7 - 9	28	16	34,5	6				K001596.009
13	9,5 - 13	30	18	38,5	9		20	2	K001596.013
15,5	13 - 15,5	32	20	41,8	12				K001596.015
19	15,5 - 19	34	22	45,5	15				K001596.019
23	20 - 23	43	28	57,5	19	9	25	3	K001596.023
26	23 - 26	44	29	60	22				K001596.026
28,5	26 - 28,5	47	32	64,5	24				K001596.028
31	28,5 - 31	47	32	65,5	27				K001596.031
33	31-33	56	36	75,5	29				K001596.033
36	33-36	57	40	78	32	11	30	3	K001596.036
39	36-39	59	42	81,5	34				K001596.039
43	39-43	61	44	85,5	38				K001596.043
46	43-46	62	45	88	41				K001596.046
49	46-49	67	48	95,5	44				K001596.049
52	49-52	72	53	102	47	14	40	4	K001596.052
58	53-58	74	55	107	52				K001596.058
61	58-61	77	58	111,5	56				K001596.061



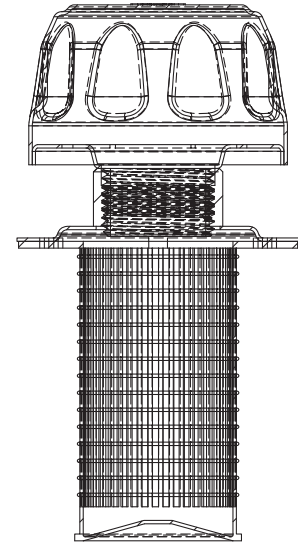
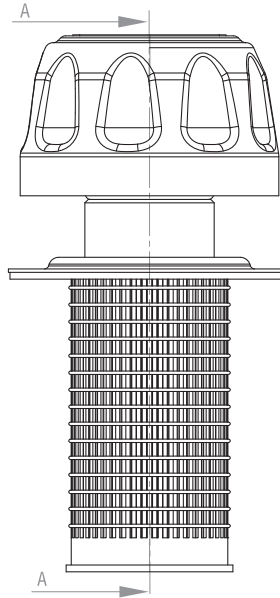
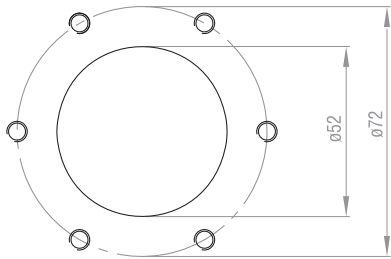
ØD1	Çap Aralığı Diameter Range	L1	L2	H	D2	B	S	Sipariş Kodu Order Code
7	5,5 - 7	44	28	5	5,5	16	1,5	K001597.007
9	7 - 9	48	32	6				K001597.009
13	9,5 - 13	52	36	9				K001597.013
15,5	13 - 15,5	56	40	12				K001597.015
19	15,5 - 19	60	44	15				K001597.019
23	20 - 23	76	56	19	6,6	20	2	K001597.023
26	23 - 26	78	58	22				K001597.026
28,5	26 - 28,5	84	64	24				K001597.028
31	28,5 - 31	84	64	27				K001597.031
33	31-33	92	72	29				K001597.033
36	33-36	104	80	32	9	25	3	K001597.036
39	36-39	108	84	34				K001597.039
43	39-43	112	88	38				K001597.043
46	43-46	114	90	41				K001597.046
49	46-49	118	90	44				K001597.049
52	49-52	134	106	47	11	30	3	K001597.052
58	53-58	138	110	52				K001597.058
61	58-61	138	110	56				K001597.061



DN	Dış Çap (ØD) O.D. of Pipe / Tube/Hose mm	Anma Çapı (R) Boru Dış Nominal Bore Pipe inch	A	H1	H2	L	G	Sipariş Kodu Order Code
20	25 26.9	- 3/4	30	70	40	40	M10	L6UB020.D02
25	30 33.7	- 1	38	76		48		L6UB025.D02
32	38 42.4	- 1 1/4	46	86		56		L6UB032.D02
40	44.5 48.3	- 1 1/2	52	92	50	62	M12	L6UB040.D02
50	57 60.3	- 2	64	109		76		L6UB050.D02
65	76.1 88.9	2 1/2 3	82	125		94		L6UB065.D02
80	108 114.3	- 4	94	138	60	106	M16	L6UB080.D02
100	133 139.7	- 5	120	171		136		L6UB100.D02
125	159 168.3	- 6	148	191		164		L6UB125.D02
150	191 193.7	- -	176	217	70	192	M20	L6UB150.D02
175	216 219.1	- 8	202	249		218		L6UB175.D02
200	267 273	- 10	228	283		248		L6UB200.D02
250	318 323.9	- 12	282	334	70	302	M24	L6UB250.D02
300	355.6 368	- -	332	385		352		L6UB300.D02
350	406.4 419	16 -	378	435		402		L6UB350.D02
400	508 521	- -	428	487	70	452	M24	L6UB400.D02
500			530	589		554		L6UB500.D02



Montaj Detayı / Mounting Detail



KESİT A-A / SECTION A-A

<b>Ara Kapak / Breather Cap</b>	: Çelik Krom Kaplanmış / Steel, Chrome Coated
<b>Üst Kapak / Cover</b>	: Çelik Krom Kaplanmış / Steel, Chrome Coated
<b>Filtre / Filter</b>	: Plastik / Plastic
<b>Filtreleme Derecesi / Filter Micron Rating</b>	: 300µm
<b>Conta / Gaskets</b>	: Mantar - Kauçuk / Cork - Rubber

Sipariş Kodu Order Code	Ölçü Size	Tip Type
L3D100R00N	Orta / Middle (Ø80 mm)	Klipsli, Kromajlı, Zincirli / Clip on, Chrome Plated, Chained
L3D100R00B	Orta / Middle (Ø80 mm)	Klipsli, Siyah Boyalı / Clip on, Black
L3D100V00B	Orta / Middle (Ø80 mm)	Vidalı (R1"), Siyah Boyalı / Screwed (R1"), Black
L3D100V00N	Orta / Middle (Ø80 mm)	Vidalı (R1"), Kromajlı / Screwed (R1"), Chrome Plated
L3D100PA00	Küçük / Small (Ø50 mm)	Vidalı (R1"), Plastik / Screwed (R1"), Plastic

Kelepçe Gövdesi Malzemeleri ve Malzeme Özellikleri / Clamp Body Materials and Materials Properties				
	P	N	A	T
Kelepçe Gövde Malzemeleri Clamp Body Materials	Polipropilen (Kopolimer) PP Polypropilene (Copolymer) PP	Polyamid PA Polyamide PA	Alüminyum AL Aluminium AL	Termoplastik Elastomer TPE Thermoplastic Elastomer TPE
<b>Mekanik Özellikler</b> Mechanical Properties				
Izod Darbe Dayanımı (Çentikli, 23°C) Izod Impact Strength (Notched, 23°C)	> 40 KJ/m <sup>2</sup> ISO 180	> 5 KJ/m <sup>2</sup> ISO 180	---	---
Izod Darbe Dayanımı (Çentikli, -30°C) Izod Impact Strength (Notched, -30°C)	> 6 KJ/m <sup>2</sup> ISO 180	> 2 KJ/m <sup>2</sup> ISO 180	---	---
Elastisite Modülü Modulus of Elasticity	1200 - 1250 N/mm <sup>2</sup> ISO 527-2	> 2000 N/mm <sup>2</sup> ISO 527-2	70.000 N/mm <sup>2</sup>	3.6 N/mm <sup>2</sup> (Modulus @100) ASTM D 412
Çekme Dayanımı Tensile Strength at Yield	> 23 N/mm <sup>2</sup> ISO 527-2	> 60 N/mm <sup>2</sup> ISO 527-2	> 160 N/mm <sup>2</sup> DIN EN 10002	> 3.95 N/mm <sup>2</sup> ASTM D 412
Sertlik Hardness	> 80 ISO 2039-2 (Rockwell-R)	> 70 ISO 868 (Shore D)	> 80 Brinell Hardness	> 85 ASTM D 2240 (Shore A)
<b>Isıl Özellikler</b> Thermal Properties				
Önerilen Sıcaklık Aralığı Recommended Temperature Range	-30°C + 90°C	-40°C + 120°C	Max. 300°C	-40°C + 120°C
<b>Kimyasal Özellikler</b> Chemical Properties				
Zayıf Asitler, Solventler Weak Acids, Solvents	Koşula Bağlı Dayanıklı Conditionally Consistent	Koşula Bağlı Dayanıklı Conditionally Consistent	Koşula Bağlı Dayanıklı Conditionally Consistent	Dayanıklı Consistent
Benzin, Madeni Yağlar Benzine, Mineral Oils	Koşula Bağlı Dayanıklı Conditionally Consistent	Dayanıklı Consistent	Dayanıklı Consistent	Koşula Bağlı Dayanıklı Conditionally Consistent
Alkol, Diğer Yağlar, Deniz Suyu Alcohol, Other Oils, Seawater	Dayanıklı Consistent	Dayanıklı Consistent	Dayanıklı Consistent	Dayanıklı Consistent

**Tüm Metal Parçalar**

- Standart olarak St-37-2 (S235JR-EN 10025) karbon çelikten üretilir. İstek üzerine, paslanmaz kalite 304 veya 316 olarak üretilebilmektedir.
- Standart olarak Fe/Zn 8C Cr3-B galvaniz kaplanır. İstek üzerine, kaplamasız veya fosfat kaplamalı üretilebilmektedir.
- Standart dış tipli metrikler. UNC, UNF gibi farklı diş tipleri de üretilebilmektedir.

**All Metal Parts**

- Are made of carbon steel St 37-2 (S235JR-EN 10025) as a standard. Stainless steel (AISI 304, AISI 316) is also available upon request.
- Coated with Fe/Zn 8C Cr3-B galvanized as standard. Untreated, phosphated, zinc-nickel or other alternative surface finishing are available upon request.
- Are metric threaded as a standard. Other alternative threads such as UNC, UNF are available upon request.

**Plastik Parçalar**

- Polipropilen, polyamid ve TPE gruplarında talebe bağlı olarak UF 94'e göre V-0 yanmazlık sınıfında ürünler üretilebilmektedir.

**Plastic Parts**

- Polypropilene, Polyamide and TPE plastic parts could be V-0 resistant acc. to UL 94 upon request.

**Malzeme ve Kaplama Çeşitleri**  
Material and Surface Finishing

**CrNi 316 Paslanmaz Çelik**  
AISI 316 Stainless Steel

**CrNi 304 Paslanmaz Çelik**  
AISI 304 Stainless Steel

**Karbon Çelik, Delta DMS Kaplamalı , Kırmızı Pas Dayanımı: 1.000 saat**  
Carbon Steel, Delta DMS coated, Red Rust Resistance: 1.000h. **DELTA DÖRKEN**

**Karbon Çelik, Çinko Nikel( Fe/ZnNi ) Kaplama , Kırmızı Pas Dayanımı: 720 saat**  
Carbon Steel, Zinc/nickel ( Fe/ZnNi ) coated, Red Rust Resistance: 720h.

**Karbon Çelik Fe/Znph Fosfatlı**  
Carbon Steel Fe/Znph Phosphated

**Karbon Çelik Fe/Zn 8C Galvaniz ve Mavi Krom Kaplamalı**  
Carbon Fe/Zn 8C Galvanized and Blue-Chromating

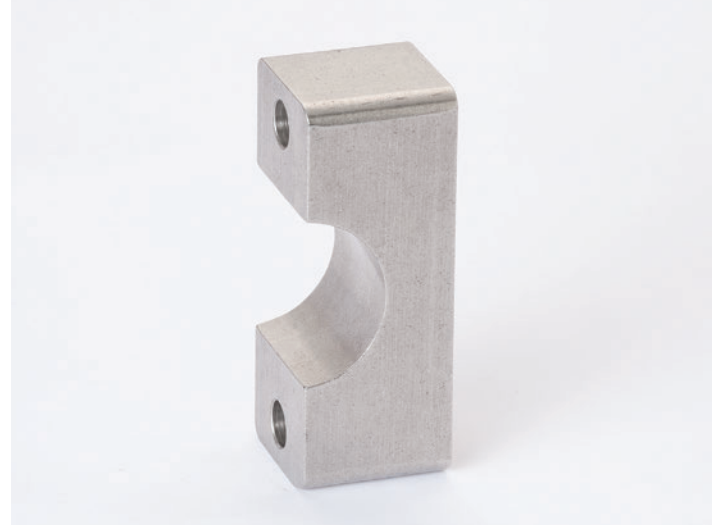
**YENİ / NEW**  
Kırmızı Pas Dayanımı: 1.000 saat  
Red Rust Resistance: 1.000h.

**YENİ / NEW**  
Kırmızı Pas Dayanımı: 720 saat  
Red Rust Resistance: 720h.



\* Plastik Enjeksiyon ve Talaşlı İmalatta, farklı uygulamalara yönelik tasarım ve üretim desteği.  
\* Injection Moulded or Machined Product Design for various applications.





\* Plastik Enjeksiyon ve Talaşlı İmalatta, farklı uygulamalara yönelik tasarım ve üretim desteği.  
\* Injection Moulded or Machined Product Design for various applications.



\* Yüzlerce çeşit tapa / kapak için web sitemizi ziyaret ediniz.  
\* Visit our website for different types of caps & plugs.

